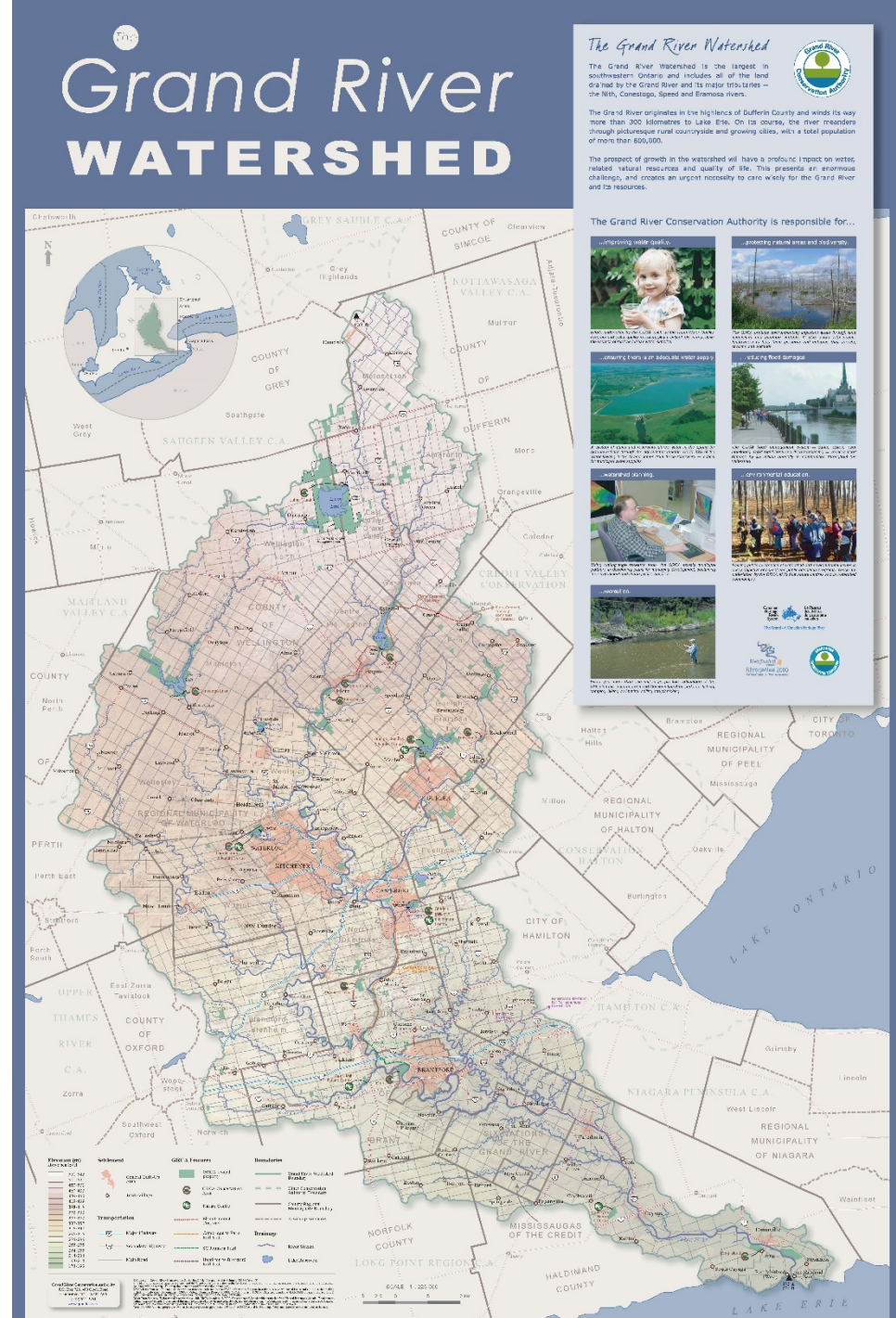


Volunteers Collaborate to Reduce Giant Hogweed Along the Grand River

Giant Hogweed Mitigation Project



- Southern Ontario's Largest watershed
- A Canadian Heritage River
- Feeds into Lake Erie
- About 1 million people live in this watershed
- Over 80 varieties of fish thrive here
- A great tourism feature



A future to avoid ...

Quote by Joseph Caffery about the Mulkear River in Ireland

“... since the 1980s the plant has seriously impacted on the beneficial use of the watercourse. Continuous, dense stands of this tall and hazardous plant have established along the river corridor and, over many kilometers of channel, have precluded safe access to anglers or other water users.”

The Approach

- Focus on successes
 - Avoid scaring the public
 - Identify and work with stakeholders
 - Educate Landowners
- Few populations so far
 - Few injuries so far
 - Avoid reduction of tourism
 - Don't stir up the trolls
 - Parties with vested interests
 - Most people don't know what it is or what it looks like
 - Most think it is the governments problem

Education

The magnificent and the important are not the same. The small young plant is the important one we want to deal with.

Mailbox distribution



Partners and Sponsors

- **County of Brant was first to partner with us**
- **Invasive Species Plant Council**
- **Freedom House (church) is our sponsoring agency**
- **Grand River Rafting (a local outfitter) has provided services and rafts for the efforts**
- **A local landowner provided a grant which we used to buy Hazmat suits and pay for printing handouts**

Collaborators

- Ancient Mariners Canoe Club
- Waterloo Wellington Canoe & Kayak Club
- Guelph Kayak Club
- Grand River Rafting Staff
- Grand Experiences Staff
- r.a.r.e. Charitable Research Reserve staff
- Friends of the Grand River
- Brant Rod & Gun Club
- Brant Fly Tiers
- Individuals via the *Giant Hogweed Mitigation Project* Facebook Group

Solicitation of Interest

A multi-page document outlining the project was prepared and delivered to the parties that were thought to be interested - with a requirement to respond with their interest level.

Timelines

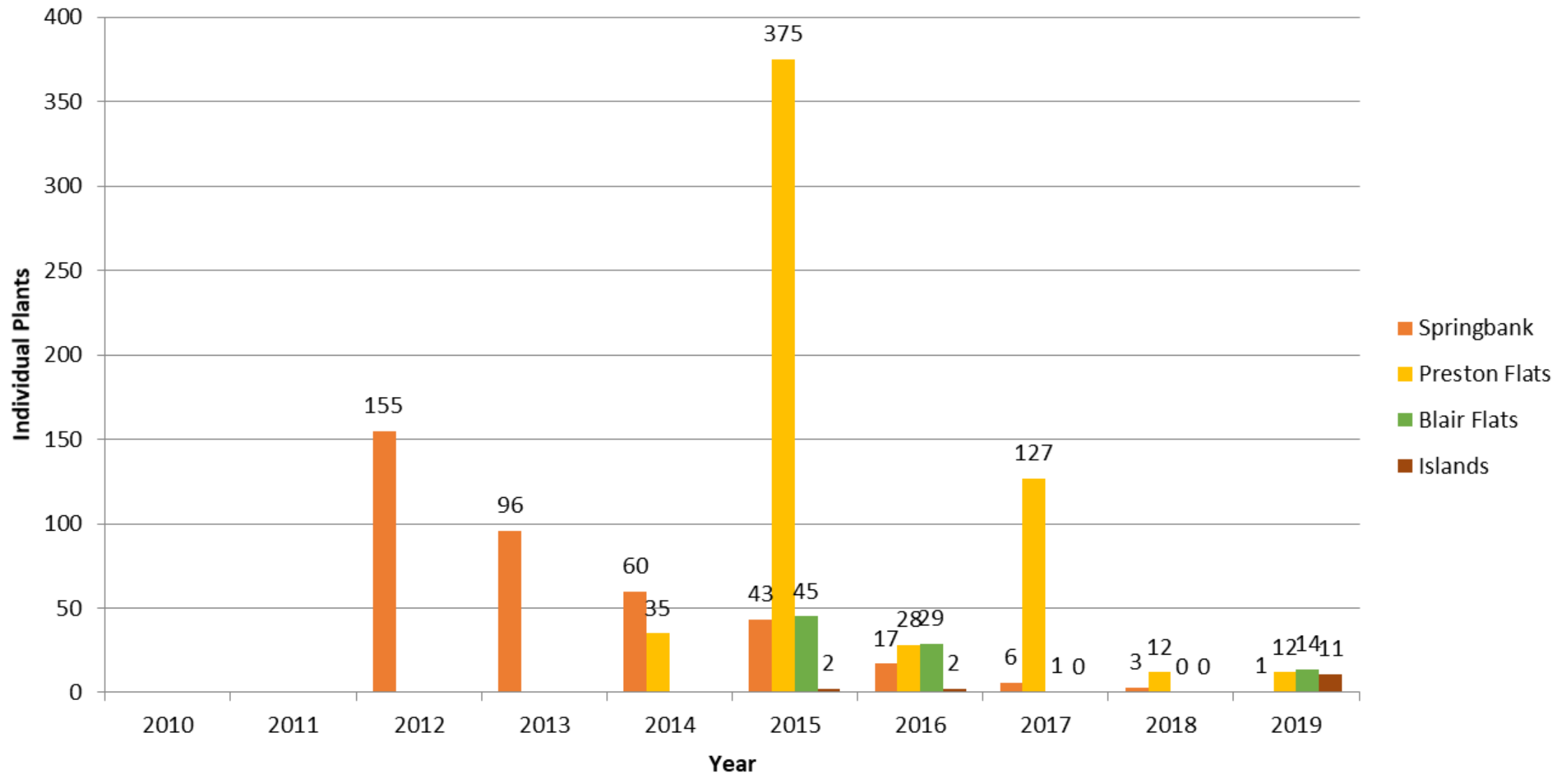
Risks

Activities

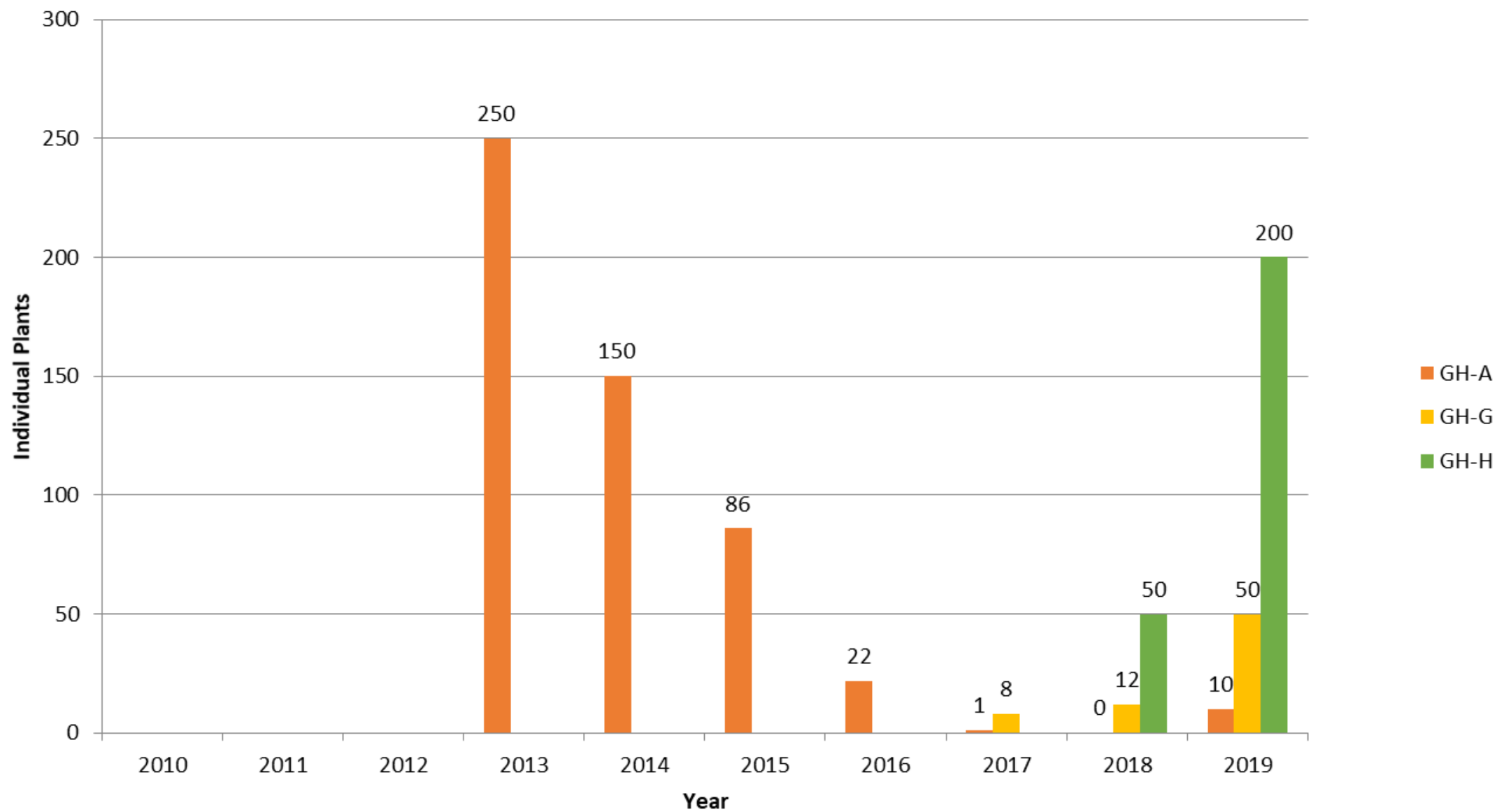
Anticipated partners

Theme – to do no harm to tourism

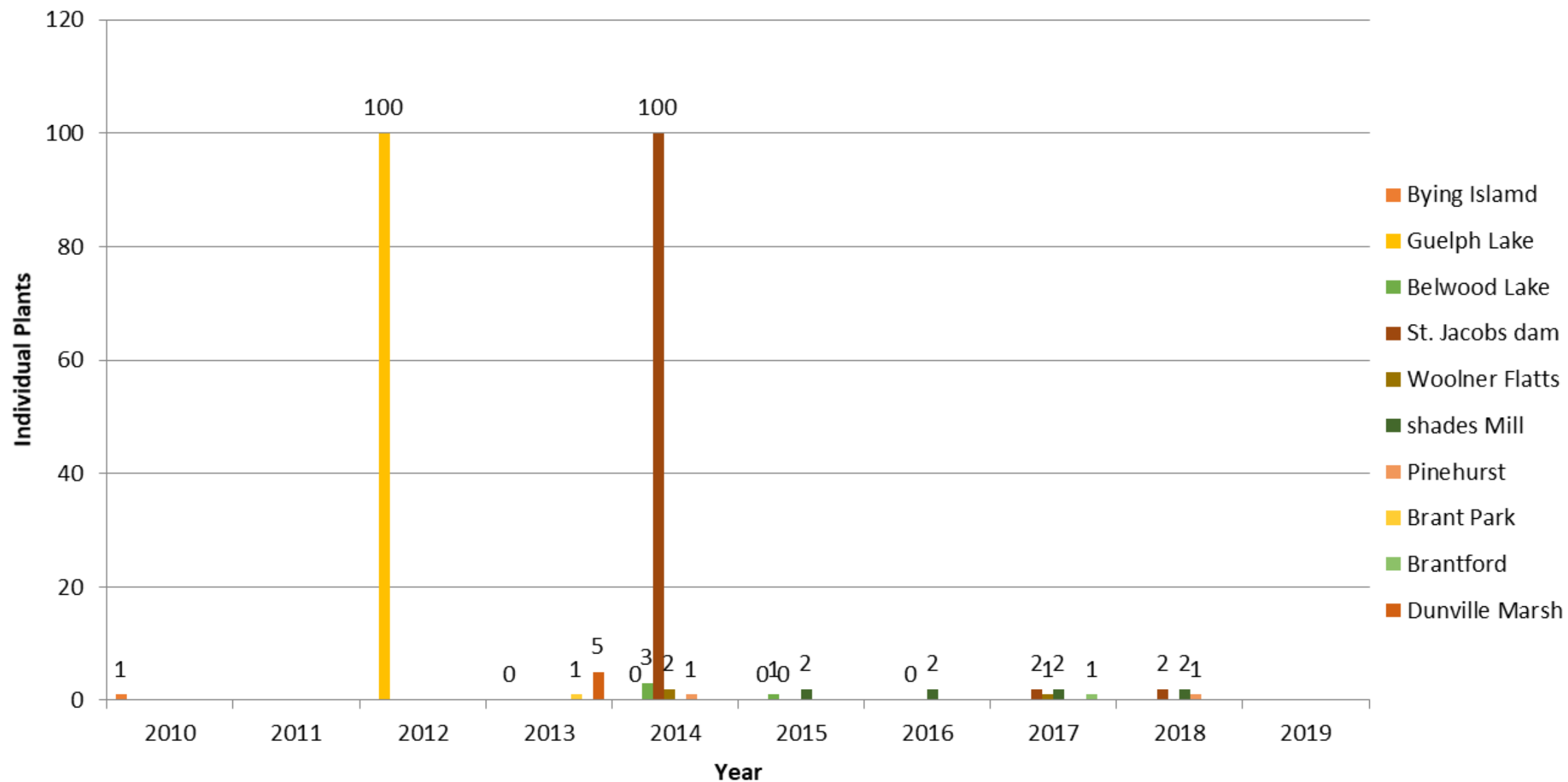
Hogweed Repeat Removals by Year r.a.r.e.



Hogweed Repeat Removals by Year GHMP



Hogweed Repeat Removals by Year GRCA



Population Patterns

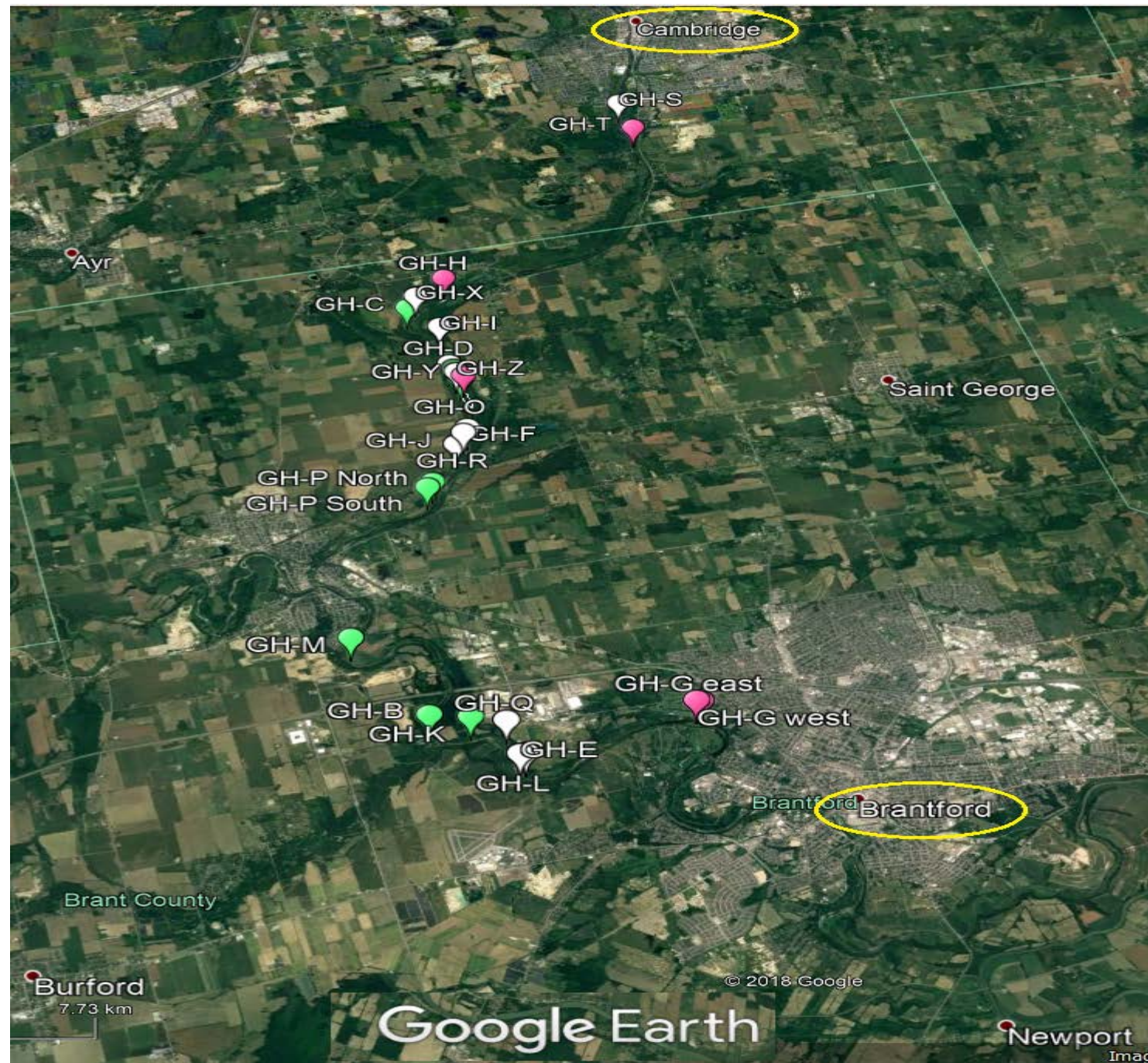
Gaps

Clusters

Humans

Water flow obstructions

Shoreline topography





GH-H

Google Earth

Imagery Date: 7/7/2018 43°16'16.35" N 80°21'29.87" W elev 242 m eye alt 379 m

Early Spring

River side Hiking WITH
landowner permission

5 km for one day is a good
target as this terrain is
difficult.

Take water to drink with you.



Late Spring

Following up on a
boater's report

(River side Hiking
WITH landowner
permission)



Summer

Following up on
boater's reports and
checking previous
locations

Note improper PPE
(no face protection)

Yes the weeds are tall



Seed Collection

Last resort at
preventing the spread

The host site will have
new sprouts next year
to deal with

They stink horribly !!

Seed disposal is a
problem still



NEXT

2020 – do it again

- Giant Hogweed Mitigation Project (a Facebook Group)
- Go for a hike in Late April – take a friend or two
- Go for a boat ride in May – with friends
- Check the group for opportunities to get suited up and overheated in July

The Springtime Assault

Giant Hogweed Hunt 'Day'

2020 April 24 to May 10

Pick your favorite spot – or ask for an assignment

Report all findings BY PHOTOS to
gianthogweed@rogers.com

Shameless plug for OFAH (they provide insurance)

Bigger Picture

- Government participation
 - Local
 - Provincial
 - Federal
-
- Volunteers are the key so far

John Kemp

Giant Hogweed Mitigation Project
gianthogweed@rogers.com

2020 /Jan/ 15

Invasive Species Plant Council Annual General Meeting