

Effective Early Detection & Rapid Response Protocols

*Ontario Invasive Plant Council
Annual General Meeting 2015
Burlington Ontario*

Rob Williams

Conservation Practitioner – The Nature Conservancy
SLELO PRISM Coordinator

St. Lawrence Eastern Lake Ontario
Partnership for Regional Invasive Species Management



Partnerships for Regional Invasive Species Management 2008



SLELO – PRISM Includes:

St. Lawrence County
Jefferson County
Lewis County
Oneida County
Oswego County

FOSTERING PARTNERSHIPS

- ❖ The Nature Conservancy
- ❖ Cornell Cooperative Extension
- ❖ Tug Hill Tomorrow Land Trust & Tug Hill Commission
- ❖ Sea Grant New York
- ❖ Save The River Organization
- ❖ New York State Department of Environmental Conservation.
- ❖ New York State Office of Parks, Recreation & Historic Preservation.
- ❖ New York State Department of Transportation
- ❖ Ducks Unlimited
- ❖ County Soil & Water Conservation Districts
- ❖ Fort Drum Military Installation
- ❖ Audubon, CNY
- ❖ Thousand Islands Land Trust
- ❖ New York Power Authority
- ❖ CNYRPDB



STRUCTURE + ORGANIZATION = SUCCESS

Realizing that surveying and responding is based on available resources, we recognized early on that we can't be everywhere detecting and responding to everything.

So we organized for efficiency by:

1. Developing Priority Conservation Areas, PCA's.
2. Developing Early Detection Protocols.
3. Developing Rapid Response Protocols.

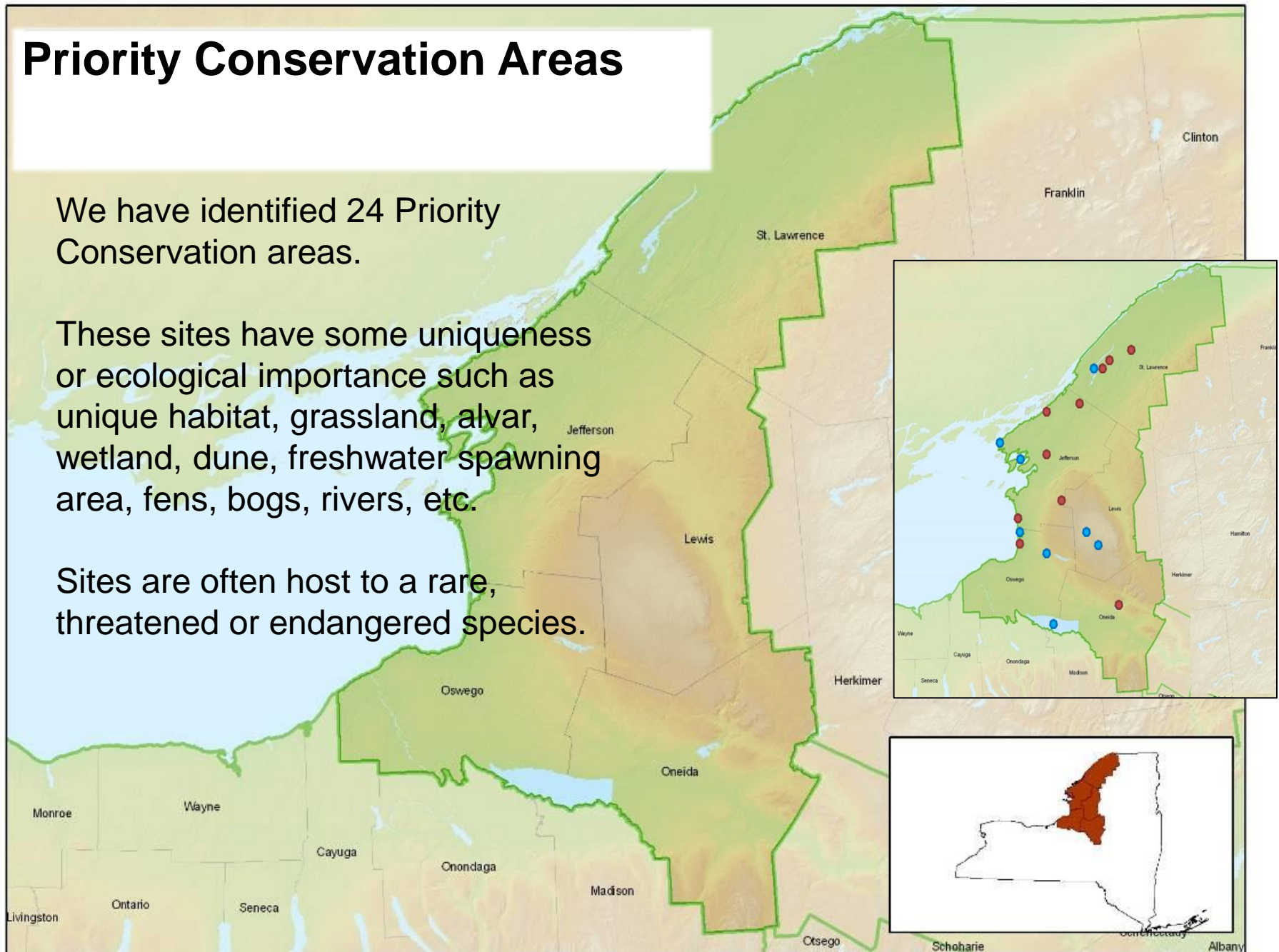


Priority Conservation Areas

We have identified 24 Priority Conservation areas.

These sites have some uniqueness or ecological importance such as unique habitat, grassland, alvar, wetland, dune, freshwater spawning area, fens, bogs, rivers, etc.

Sites are often host to a rare, threatened or endangered species.



Early Detection Protocol

Early Detection

- ☐ **Passive:** any sightings, any location aquatic/ terrestrial, by interested individuals. Report & Confirm!
- ☐ **Deliberate:** to deliberately conduct surveillance in specific/planned AOC's – preserves, WMA's, ecologically sensitive areas such as alvars, fens, embayment's, etc.

Deliberate

Early Detection Field Techniques



Seasonal Employees: - “paid” employees
- conduct ED surveillance
- June – October.

+

Trained Volunteers: - Training events for stakeholders
- Required volunteer monitoring
eg. “hunting preserves”

+

Conduct ED Surveillance within:

Priority Conservation Areas or “natural assets”

Water bodies, embayment’s, wetlands,
Alvars, Fens, migratory & grassland bird
conservation areas, etc.,



Continued...

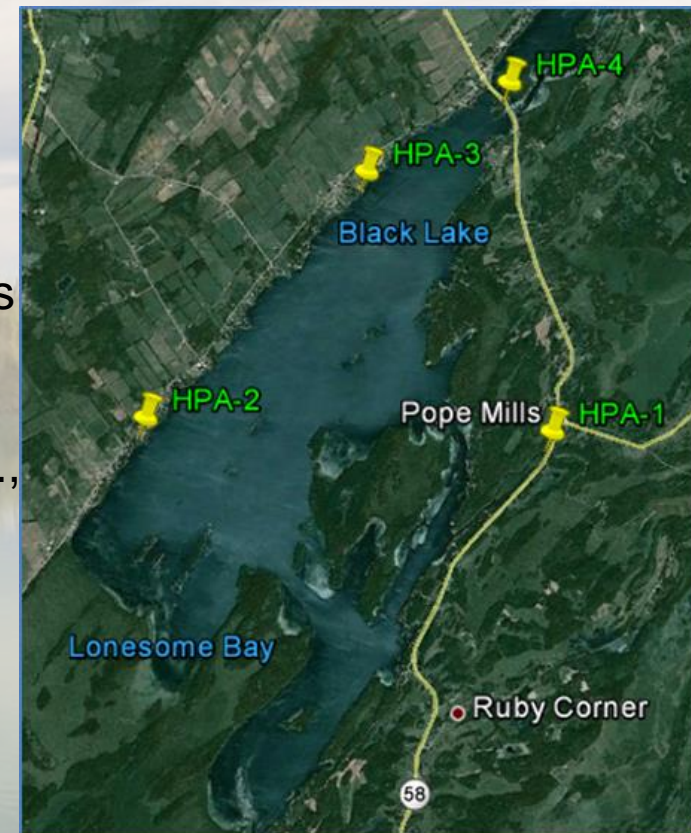
Deliberate ED continued...

HPA Protocol:

- Highly Probable Areas
- Focusing on HPA's increases efficiency & effectiveness.

Examples of HPA's

- Boat launch sites
- Quiet shallow coves
- Public fishing access locations
- Trailheads, parking areas
- Disturbed areas
- Homogenous tree stands, etc.,



Continued...

Deliberate ED continued...

❖ Visual Observations:

- Must be trained in species I.D.
- Mark & record observations using GPS

❖ Rake Toss:

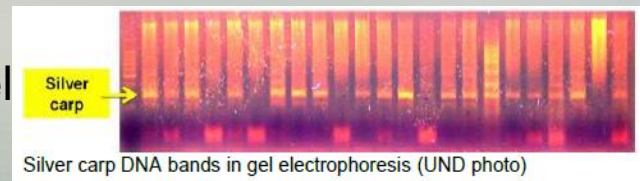
- Formal “consistent” protocol.
- Record & GPS observations



❖ E-DNA:

- Gaining attention but not at PRISM level

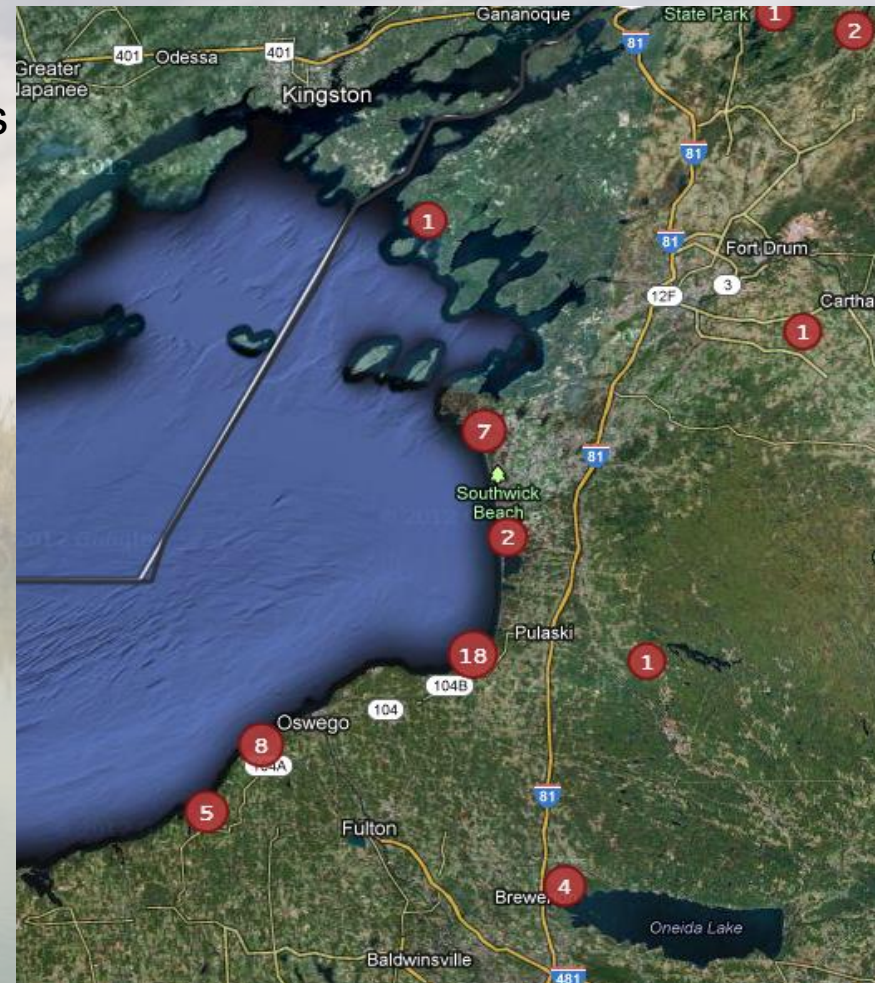
Continued...



Deliberate ED continued...

iMapinvasives & Field Reports

- Field reports are created for all PCA's
- All of our work is recorded into iMapinvasives





Rapid Response

3-Levels of Rapid Response

Level 1-

Small to medium scale infestation

- * Organize a volunteer event
- * Canoes, hand-pulls, seasonal employees, etc.
- * Non-monetary \$\$
- * **Nominal Resources Required**

Level 2-

Medium scale infestation

- * Some costs
- * may need permits
- * licensed pesticide applicator
- * equipment
- * **Moderate Resources Required**

For level 1 and 2 we also have two seasonal employees, certified applicators.

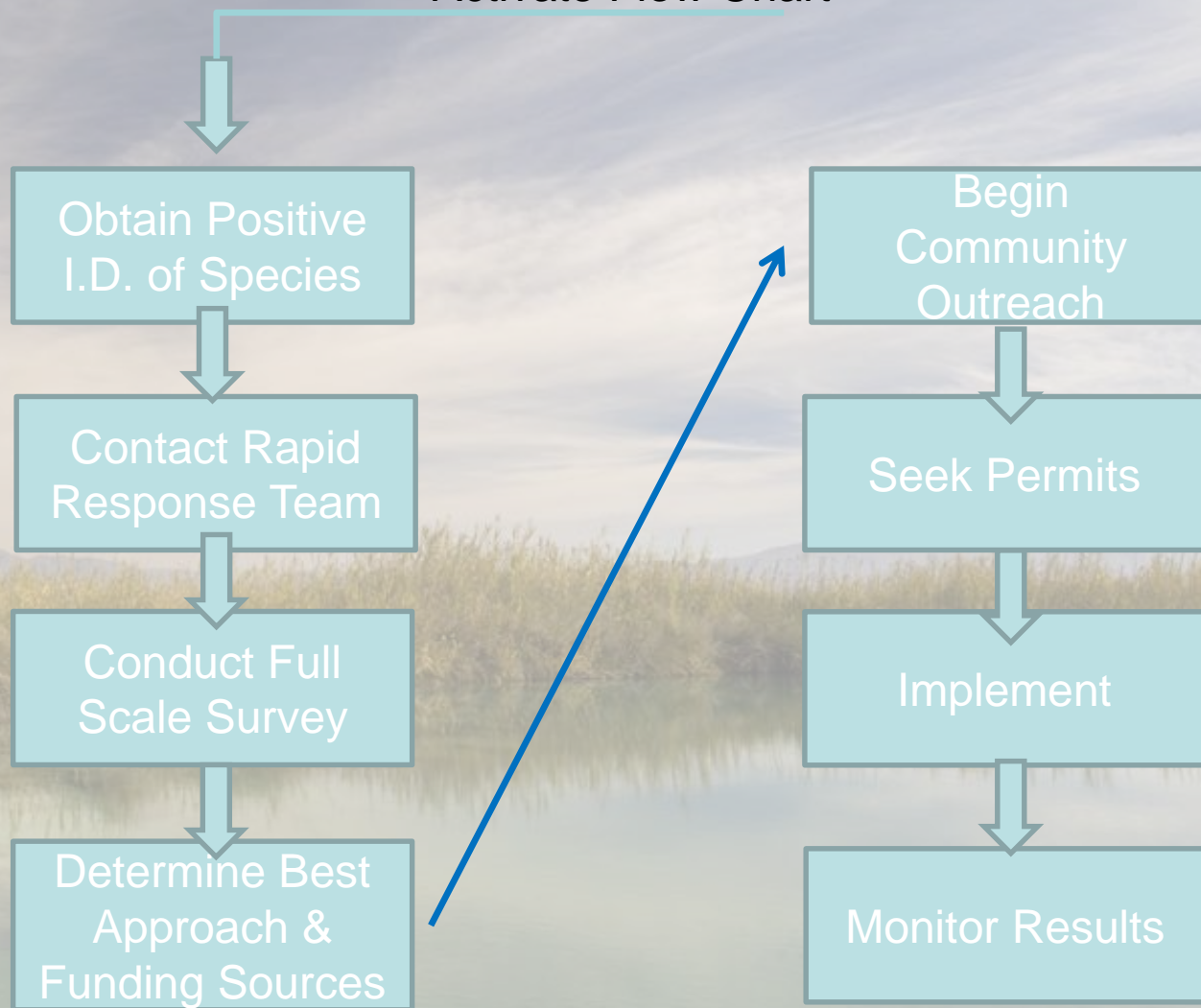
Continued....

Rapid Response cont..

Level 3-

New “large-scale” detections

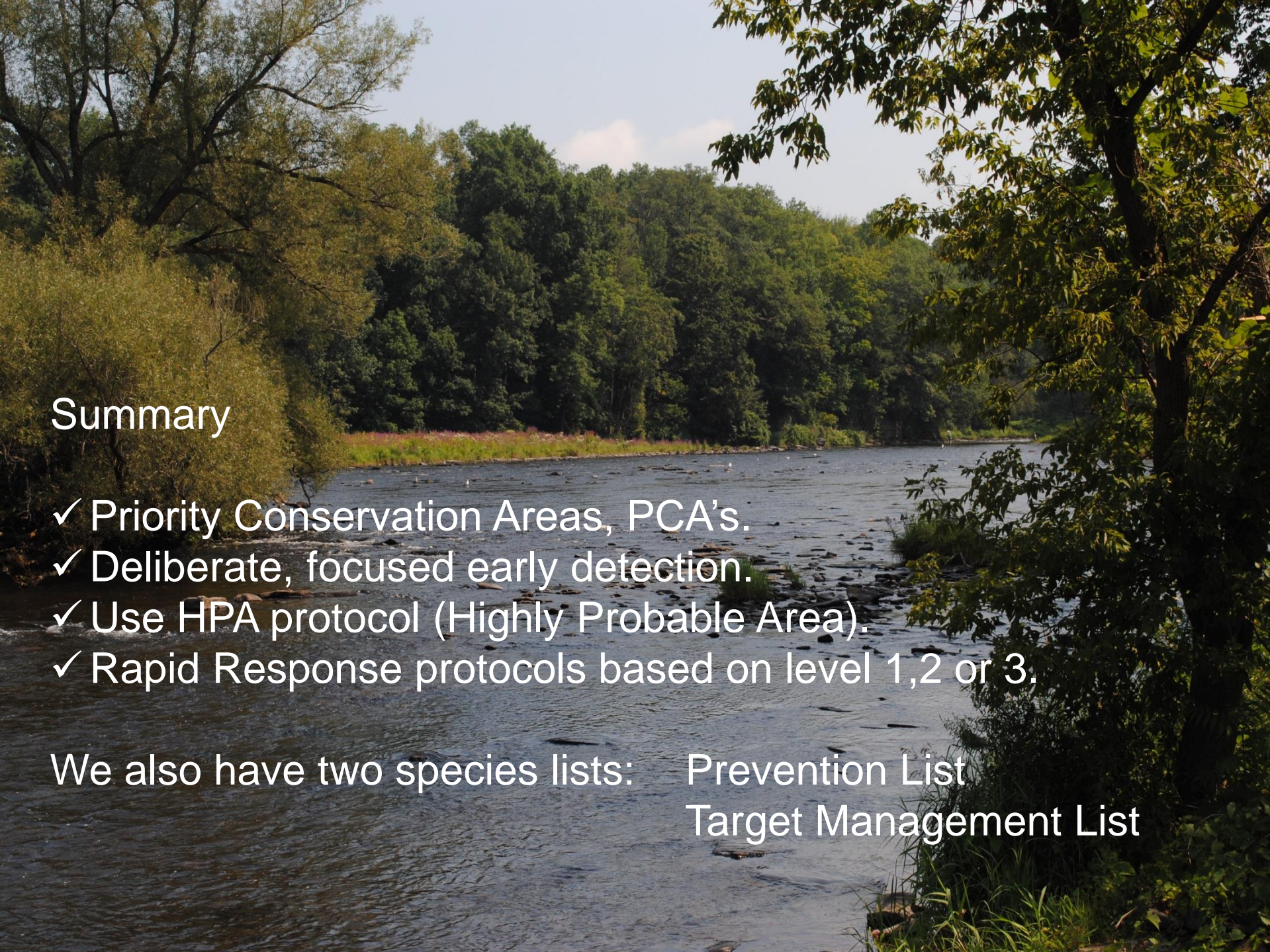
*Activate Flow Chart





Recent Successes:

- ✓ Conducted early detection surveillance on all 24 PCA's on a two-year rotation.
- ✓ Nine rapid responses in the past four years on target management species.
- ✓ One rapid response on a new introduction/prevention species, water hyacinth (*Eichornia crassipes*)

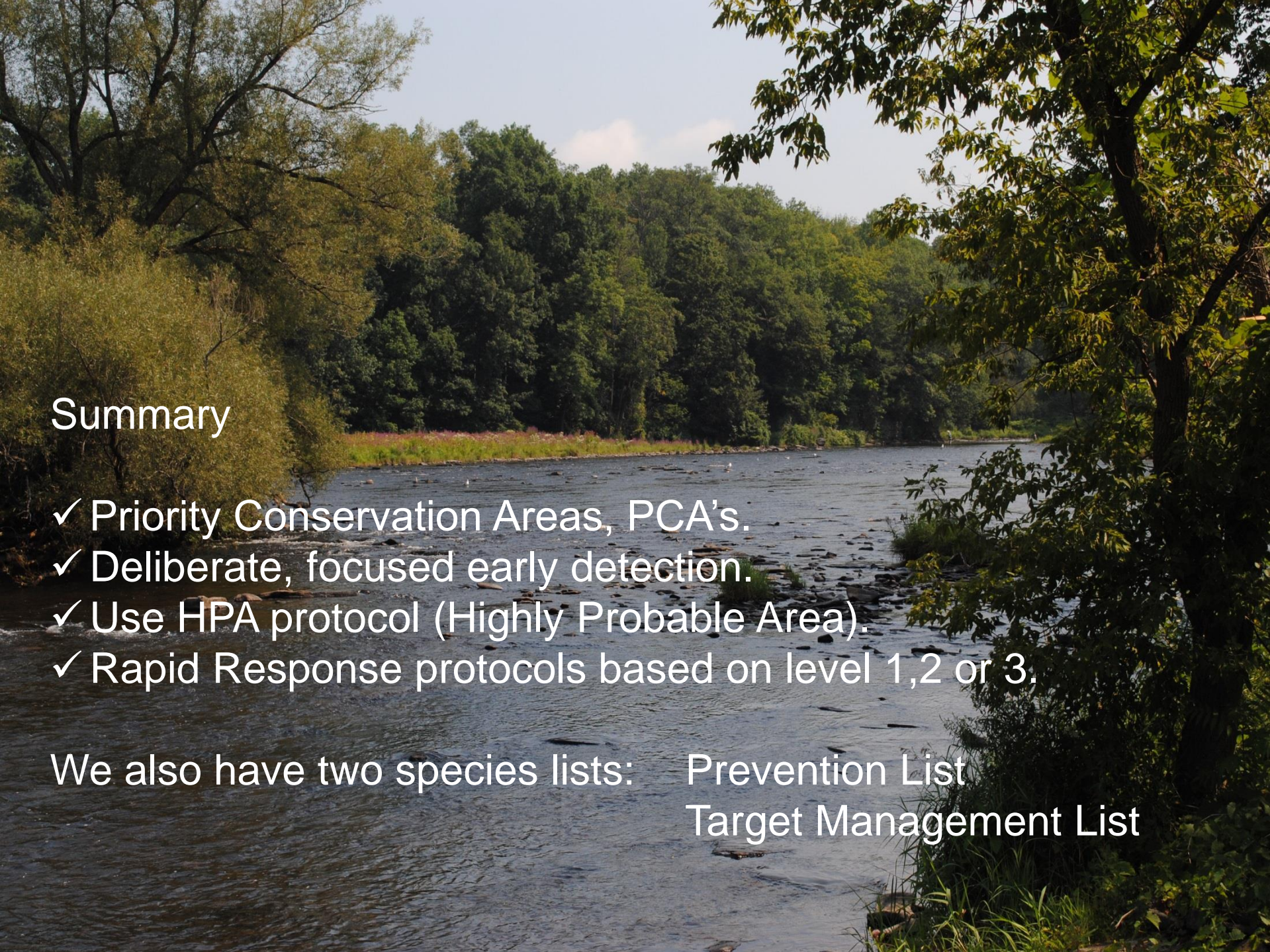


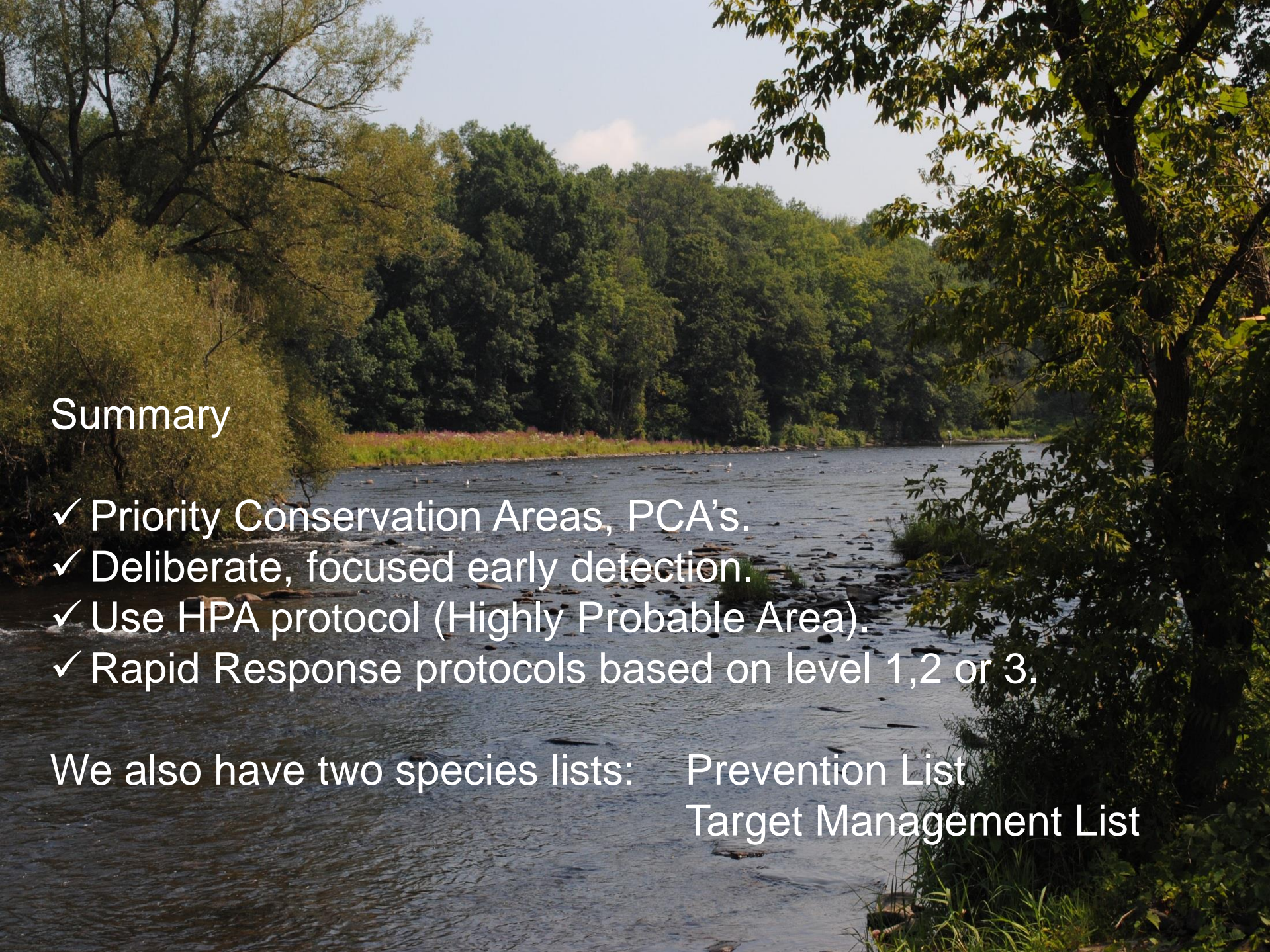
Summary

- ✓ Priority Conservation Areas, PCA's.
- ✓ Deliberate, focused early detection.
- ✓ Use HPA protocol (Highly Probable Area).
- ✓ Rapid Response protocols based on level 1,2 or 3.

We also have two species lists:

- Prevention List
- Target Management List

- 
- ## Summary
- ✓ Priority Conservation Areas, PCA's.
 - ✓ Deliberate, focused early detection.
 - ✓ Use HPA protocol (Highly Probable Area).
 - ✓ Rapid Response protocols based on level 1,2 or 3.
- We also have two species lists:
- Prevention List
 - Target Management List



Summary

- ✓ Priority Conservation Areas, PCA's.
- ✓ Deliberate, focused early detection.
- ✓ Use HPA protocol (Highly Probable Area).
- ✓ Rapid Response protocols based on level 1,2 or 3.

We also have two species lists:

- Prevention List
- Target Management List



“When we see nature as a community to which we belong, only then will we begin to treat it with love and respect”

~ Aldo Leopold

Thank you!

rwilliams@tnc.org

www.sleloinvasives.org